

ISO 9000 series of standards were once thought of as requirements only for companies competing in a global market. Today these standards along with others such as QS-9000 are requirements for most companies whether they compete in a global or domestic market. *InfinityQS GTS* is a gage calibration and tracking system that helps companies achieve the requirements of these standards. The package consists of a comprehensive database where calibration requirements, procedures and results can be controlled and maintained. In addition, gage tracking information from company location all the way down to the cabinet drawer allow gages to be easily located within even the largest facilities.

100% ODBC Compliant

Like *InfinityQS SPC*, *InfinityQS GTS* will run on top of any ODBC compliant database from single-tier databases such as Access up to the high-end client-server databases such as Oracle, Sybase, Informix and Progress. This system stores everything into your centralized database system, from calibration procedures and results all the way down to the drawer where a gage resides.

Key Features

InfinityQS GTS' **Hierarchical** layout takes away the tedious task of adding many gages to the system. First, you define the various Types or Categories of gages; these might include Micrometers, Calipers, Torque Wrenches, Depth Gages, Gage Blocks and Pin Gages.

Next you specify each specific Model or Series under those Types/Categories; under Calipers for example, you might have models such as Point Calipers, Low Pressure Calipers, Offset Calipers, Inside Calipers.

Once you've defined your Models/Series of gages, adding the individual gages is a snap. At a minimum, you need nothing more than the gage's ID and Serial Number. Optionally, you can also specify where and when the gage was purchased and for how much, when it was (or will be) retired and how often it must be calibrated.

Using a Single Window, new gages are easily added, moved and calibrated. You can even view a gage's calibration procedures and requirements, and access all movement and calibration history from this one window.

Calibration Cycles specify how long a gage can be active before requiring a calibration. Additionally, you can also specify an overriding calibration time that **MUST** be performed on a gage regardless of how long it was active. Calibration Cycles can be defined at the Model/Series level or for each individual gage.

Reference	Nominal
614310	0.010000
614320	0.020000
614240	0.020050
614231	0.020100
614232	0.020200
614233	0.020300
614234	0.020400
614235	0.020500
614236	0.020600

Reference	S/N	Value
614310	614310-001	.01
614320	614320-001	.02
614240	614240-001	.02005
614231	614231-001	.0201
614232	614232-001	.0202
614233	614233-001	.0203
614234	614234-001	.0204
614235	614235-001	.0205
614236	614236-001	.0206

Continued...

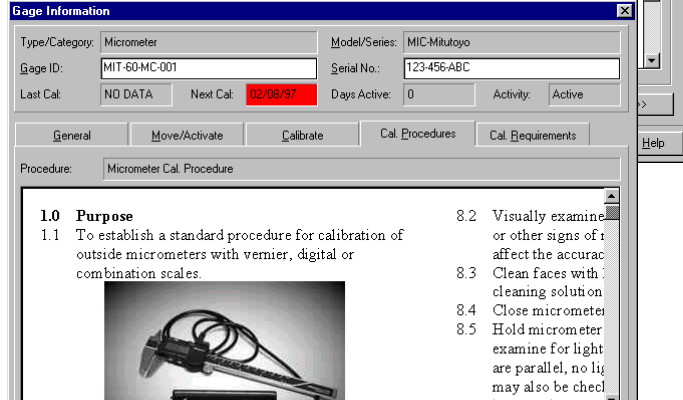
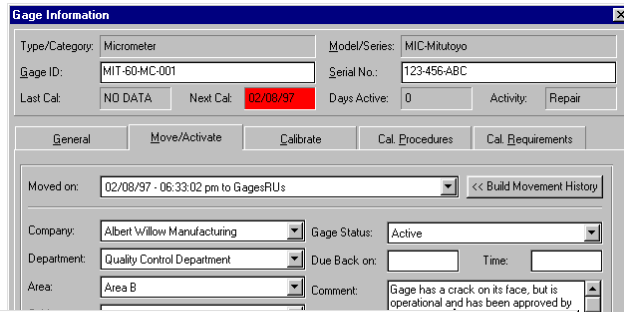
Gage Movement information is readily available from the same window used to calibrate the gage. This information is also accessible in report format and available for printout. Each movement is stored to the database. You not only know the company, department and area the gage was moved to, but can also track it right down to the cabinet and drawer it was placed in.

Calibration Procedures are defined as separate entities in the *InfinityQS GTS* database and can then be linked to any number of Model/Series of gages rather than each individual gage. This means you don't have to define procedures for each gage in your system. Procedure steps can be entered directly into the database, or if you have already generated procedures in some other word processor, these documents can be linked directly to your gages using Object Linking and Embedding (OLE) technology.

Calibration Requirements, like calibration procedures, can be created one time for one or more Model/Series of gages. Here, you specify the type of equipment used to perform the calibration, the unit of measure, the expected measurement and allowed tolerances.

From the **Calibration** folder, you can navigate previous calibration history and initiate new ones. During a calibration, the gage requirement information is passed to the calibration folder and awaits completion by the operator. During this procedure, an initial measurement is entered and if adjustments are necessary, a final measurement is also taken. At each measurement step, the row is colored Red or Green indicating whether the gage has met its specified tolerance.

Once calibration is successful, a calibration certificate number is generated, stored into the database and the certificate can optionally be printed.

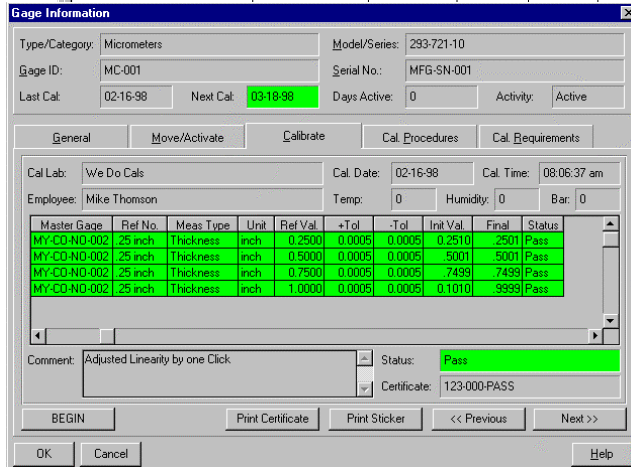


Gage Calibration Requirements

Requirements: Mitutoyo 6 Inch Micrometer Last Edit: 02/11/97

Comments: Use these requirements for all Mitutoyo 0-6 inch Micrometers

Gage Type	Meas Type	Unit	Ref. Val.	+Tol	-Tol
Square Gage Blocks	Width	Inches	0.100000	0.001000	0.001000
Square Gage Blocks	Width	Inches	0.200000	0.001000	0.001000
Square Gage Blocks	Width	Inches	0.300000	0.001000	0.001000
Square Gage Blocks	Width	Inches	0.400000	0.001000	0.001000
Square Gage Blocks	Width	Inches	0.500000	0.001000	0.001000
Square Gage Blocks	Width	Inches	0.600000	0.001000	0.001000
Square Gage Blocks	Width	Inches	0.700000	0.001000	0.001000
Square Gage Blocks	Width	Inches	0.800000	0.001000	0.001000
Square Gage Blocks	Width	Inches	0.900000	0.001000	0.001000
Square Gage Blocks	Width	Inches	1.000000	0.001000	0.001000
Square Gage Blocks	Width	Inches	2.000000	0.001000	0.001000
Square Gage Blocks	Width	Inches	3.000000	0.001000	0.001000
Square Gage Blocks	Width	Inches	4.000000	0.001000	0.001000



For more information visit our web site at www.infinityqs.com or contact your local InfinityQS representative.